

Revision 1.00

Release Date 16th June 2006



Overview

Actinic EPOS is now Chip and Pin approved! - *Create a more professional image for your business.*

Supported Transaction Types:

- Sale -
- Refund -
- PWCB - Purchase With Cash Back
- CNP - Customer Not Present
- CNP Refund - Customer Not Present Refund

No more time consuming double keying of transactions into a separate PDQ terminal, eliminate costly keying errors and speed up card transactions considerably (typical processing / authorisation time for credit cards via the integrated Chip & Pin is 3 to 5 seconds).

Credit Card receipts will be printed on your receipt printer as per your normal receipts – No need to purchase additional rolls for your PDQ terminal. Two copies will be printed one for you and one for your customer.

Multiple till points can process card transactions simultaneously. *(Multiple Chip&Pin packages Required)*

Competitive merchant rates.

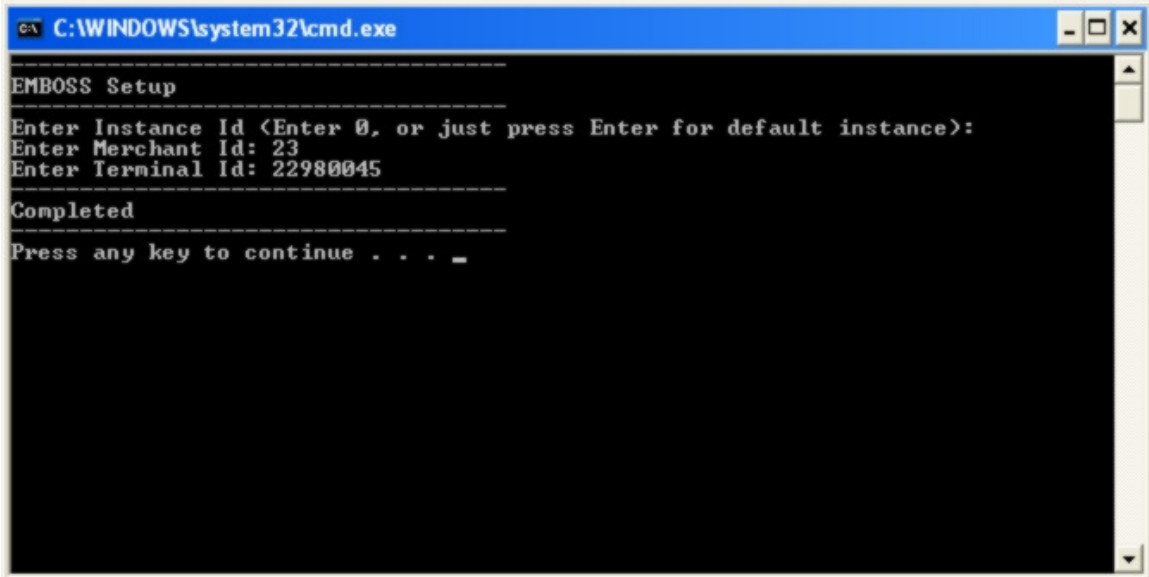
You will need:

1. Merchant Account...
The major Merchant Acquirer's are catered for including...
BMS (Barclaycard), Streamline (NatWest), Lloyds(HSBC),
Amex (available shortly with Dione Xtreme or Verifone),
RBS (available shortly)
2. Pin Pad...
A choice of Pin terminals are available – *(typical cost £195.00+Vat)*
Dione Xtreme, Verifone SC5000 or Trintech Smart5000 being
the most popular choices as these will be familiar to your
customer's as they are used in the majority of high street stores.
3. Broadband
Credit Card transactions will be processed via a broadband
internet connection. *(Typical autorisation time is just 3 to 5 seconds)*
4. Service Agreement
(minimum 3 years)
Typical costs - £19.50 per terminal per month which includes up
to 1250 transactions per terminal per month
£24.50 per terminal per month for up to 2500 transactions.
Initial Setup fee is £40.00 + Vat per terminal.

Setup

EasyVTerminal Version 2.1.0 Install

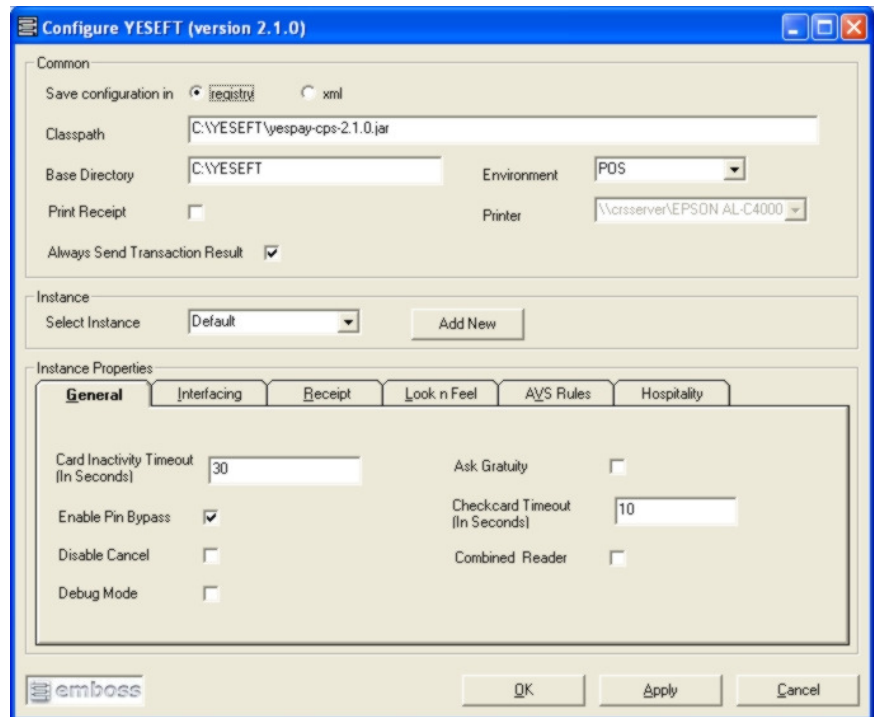
1. Download all EasyVterminal-version-2.1.0.msi
2. Remove any previous instance of EasyVTerminal from the target m/c.
3. Run the exe EasyVterminal-version-2.1.0.msi (PLEASE DO NOT CHANGE THE INSTALLATION DIRECTORY). Keep the installation directory as C:\YESEFT
4. This will install the EasyVTerminal.
5. Modify the C:\YESEFT\properties\terminal.properties for the PIN Pad being used. Default configuration is for Verifone SC5000.
6. Run the batch file EMBOSS-Setup.bat.
7. This will ask for Merchant Id and Terminal Id. Please input the merchant Id and terminal Id provided for the installation.



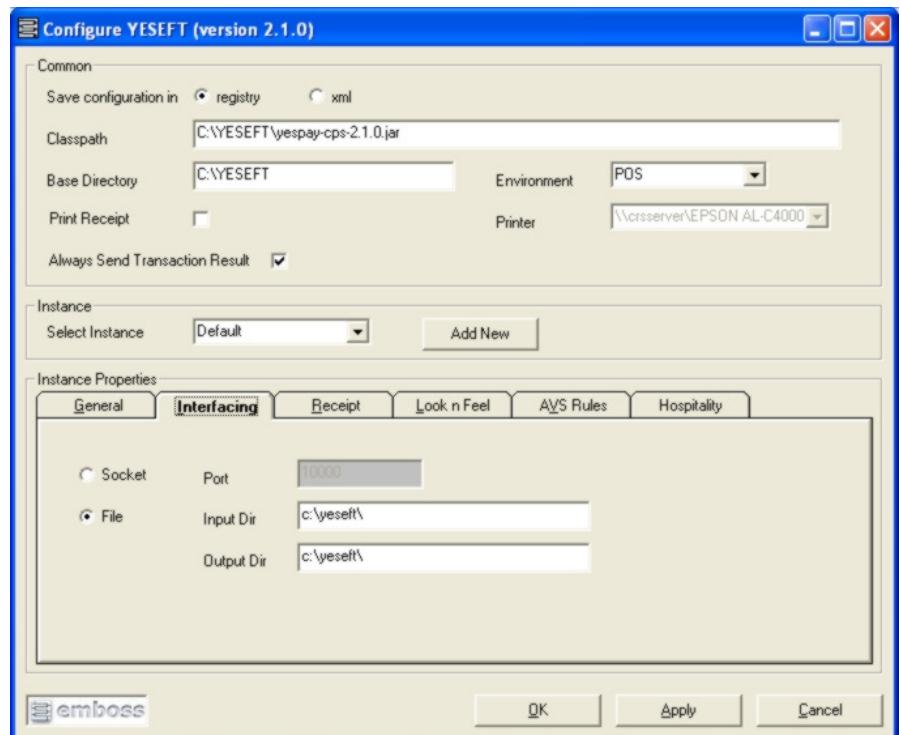
```
C:\WINDOWS\system32\cmd.exe
-----
EMBOSS Setup
-----
Enter Instance Id (Enter 0, or just press Enter for default instance):
Enter Merchant Id: 23
Enter Terminal Id: 22980045
-----
Completed
-----
Press any key to continue . . . _
```

- Run YESEFTConfig.exe. Select Ok. This will setup the default configuration. if EasyVTerminal is already installed, please ensure to set the classpath to C:\YESEFT\yespay-cps-2.0.6.jar.

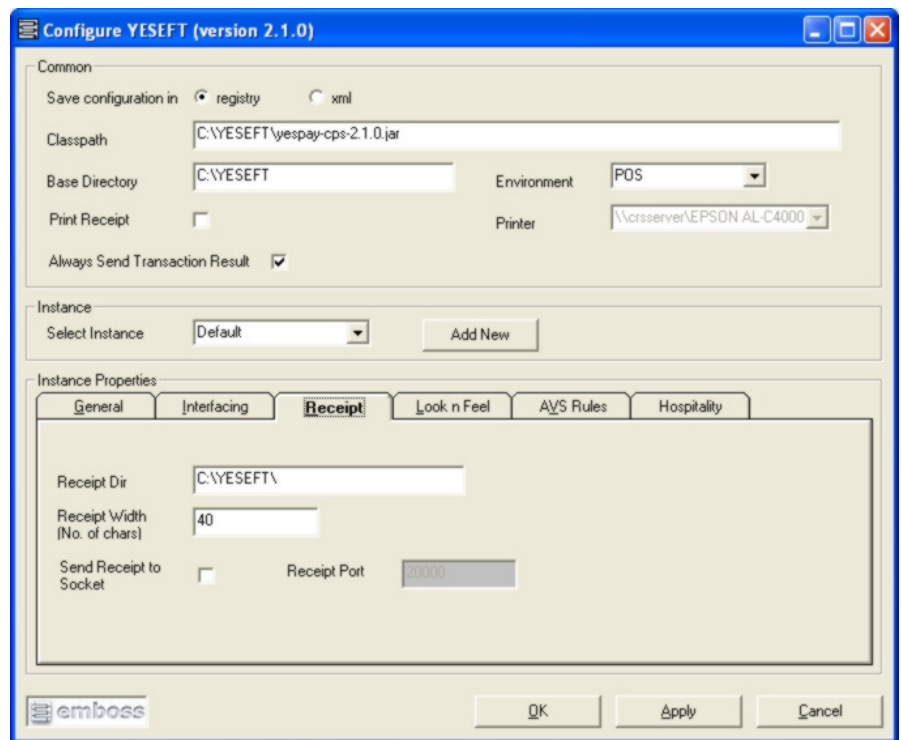
General



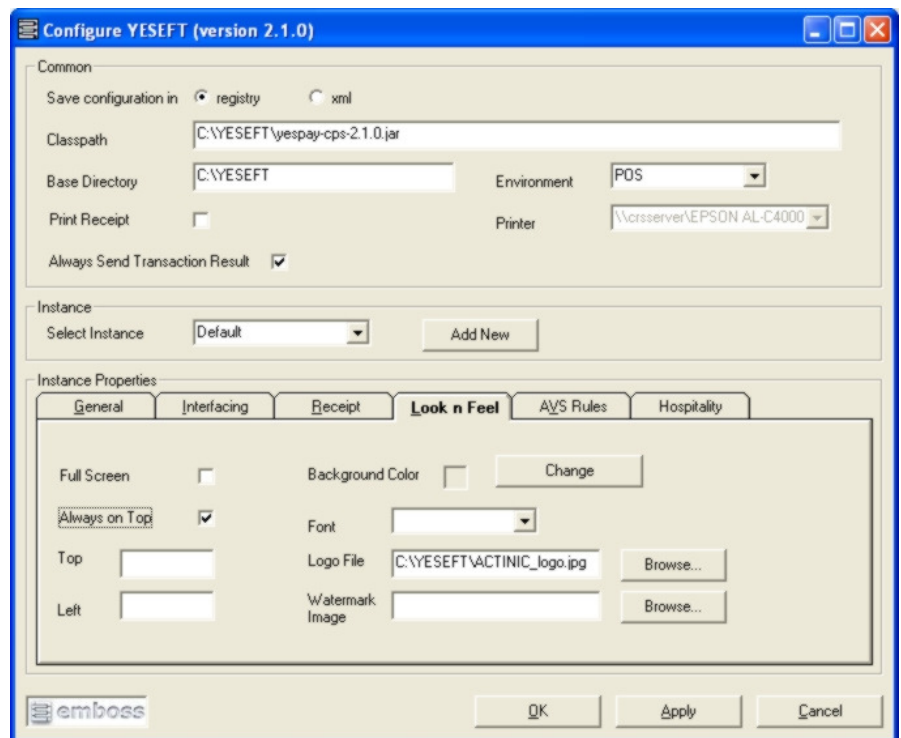
Interfacing



Receipt



Look & Feel



9. Run YESEFTInterface.exe, this will start the EasyVTerminal.

Note: A shortcut to c:\yespay\YESEFTInterface.exe should be added to the 'Startup' menu of the host Pc to ensure that the host is always available.

terminal.properties

Edit the file '`c:\yeseft\terminal.properties`' shown below to cater for the required terminal type. (shown here configured for a Dione Extreme connected to Com port 7)

```
name=terminal.properties
version=1.00
date=Mon Jun 24 14:00:00 BST 2002
# daylightsaving.auto=no

# Default Device Services

#properties directory
properties.directory=C:\\YESEFT\\properties

# Logging
logging.directory=logs\\
logging.extension=txt
# Logging level: 0=logging off; 1=exceptions only; 2=standard; 3=full
logging.level=3

logging.class=sts.logging.STSAuditLoggingSFNNoDir
cardPaymentSystem.class=yes.yeseft.cps.YESEPOSServerConnector

# Added for release STS-0082
pinVerification.class=sts.businesslogic.enhancedPinVerification
pinProgress.class=yes.yeseft.services.YESeftPinProgress
pinVerification.class.timeout=30000
smartCardReader.reporting=yes

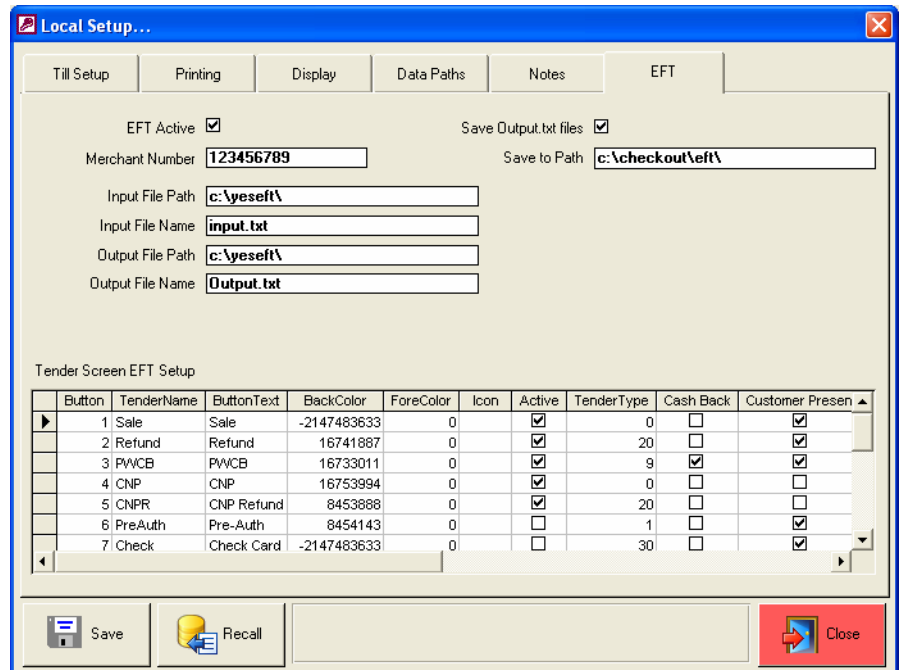
##### Trintech Smart5000 #####
#smartCardReader.port=COM1
#smartCardReader.baudrate.initial=115200
#smartCardReader.baudrate.initial=19200
#smartCardReader.timeout=10000
#smartCardReader.class=sts.drivers.cardholder.TrintechDriver01
#magStripeReader.class=sts.drivers.cardholder.TrintechDriver01
#cardHolderKeyPad.class=sts.drivers.cardholder.TrintechDriver01
#cardHolderDisplay.class=sts.drivers.cardholder.TrintechDriver01
#cardHolderSelection.class=sts.businesslogic.basicCardHolderSelection

##### Verifone SC5000 #####
#smartCardReader.port=COM1
#smartCardReader.baudrate.initial=19200
#smartCardReader.class=sts.drivers.cardholder.VerifoneSC5000Driver
#magStripeReader.class=sts.drivers.cardholder.VerifoneSC5000Driver
#cardHolderKeyPad.class=sts.drivers.cardholder.VerifoneSC5000Driver
#cardHolderDisplay.class=sts.drivers.cardholder.VerifoneSC5000Driver
#pinVerification.class=sts.businesslogic.basicPinVerification
#pinVerification.timeout=20000
#cardHolderSelection.class=sts.businesslogic.advancedCardHolderSelection
#cardHolderSelection.timeout=20000
#cardHolderDisplay.firstpage.prompt=CONFRM

##### Dione #####
smartCardReader.port=COM7
smartCardReader.timeout=2000
smartCardReader.baudrate.initial=57600
smartCardReader.class=sts.drivers.cardholder.DioneDriver
magStripeReader.class=sts.drivers.cardholder.DioneDriver
cardHolderKeyPad.class=sts.drivers.cardholder.DioneDriver
cardHolderDisplay.class=sts.drivers.cardholder.DioneDriver
cardHolderSelection.class=sts.businesslogic.advancedCardHolderSelection
pinVerification.class=sts.businesslogic.basicPinVerification
```

Actinic Epos EFT Setup Screen:

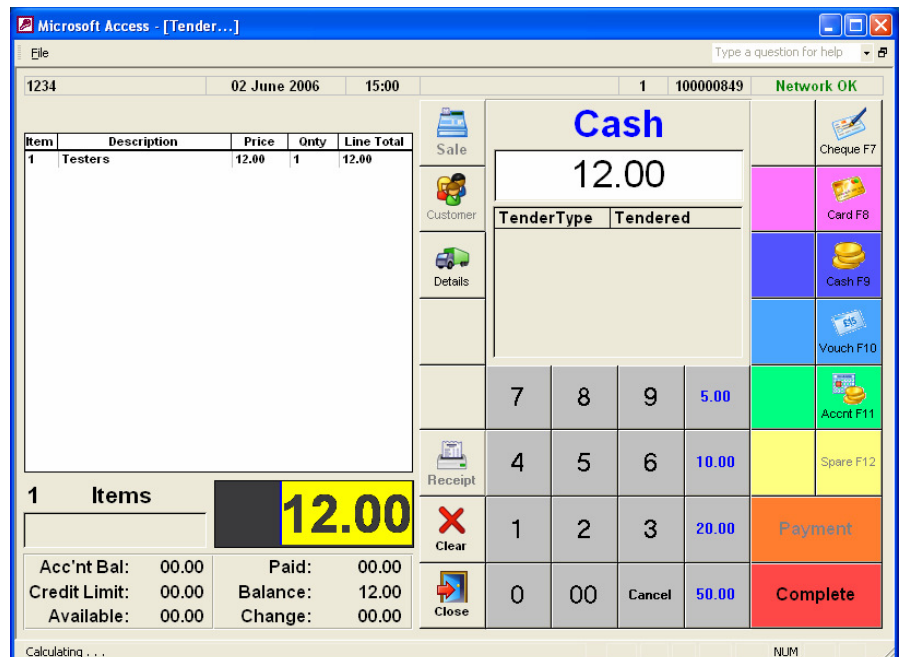
To activate the EFT functions check the EFT Active checkbox in the Local Setup screen as shown here...



Note: The file paths or Tender Screen EFT Setup **should NOT be changed**.

Actinic Epos Tender Screen:

Selecting a card tender type from the 'Tender screen' will display the credit card option buttons as shown below...



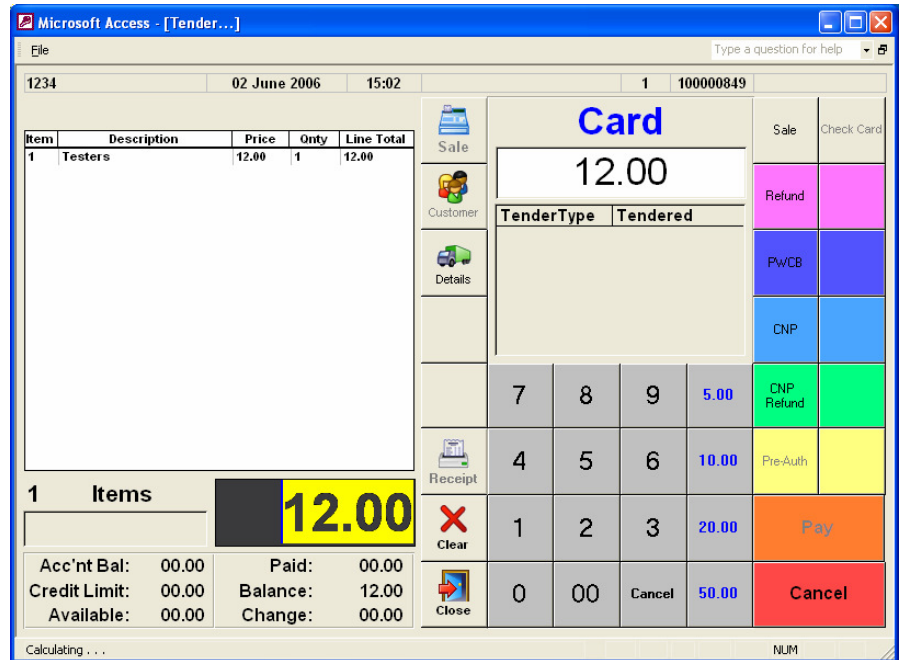
Actinic Epos EFT Tender Screen:

Options...

- Sale
- Refund
- PWCB (*Purchase with Cash Back*)
- CNP (*Customer Not Present*)
- CNP Refund

Pay...

Select 'Pay' to commence the authorisation process.



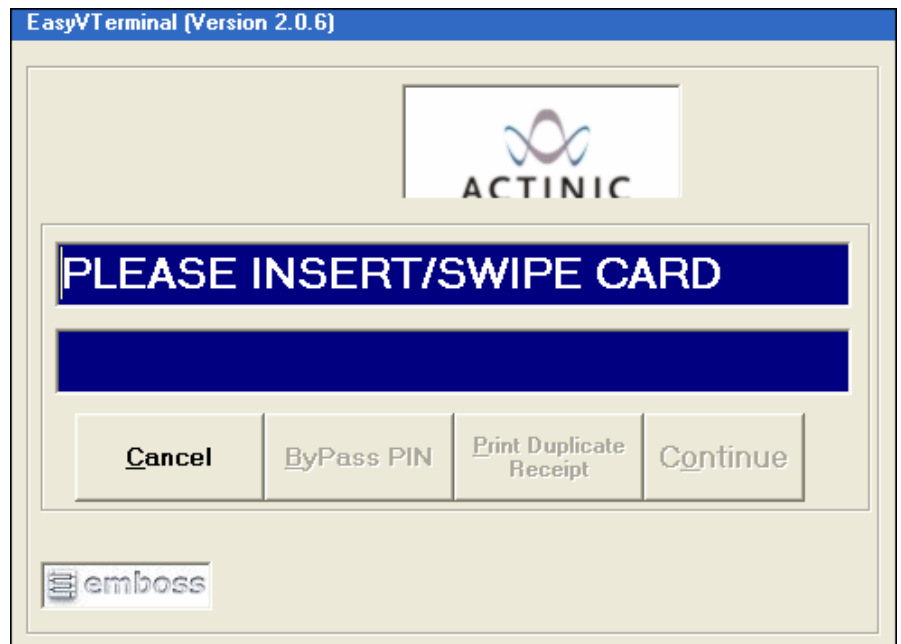
Follow the on screen prompts to complete the transaction. 'Insert Card' – 'Enter Pin' – etc...

Typical Sale:

Typical Screen prompts for a Credit Card transaction are shown here...

Insert / Swipe Card

Cancel - press 'Cancel' to cancel the current transaction

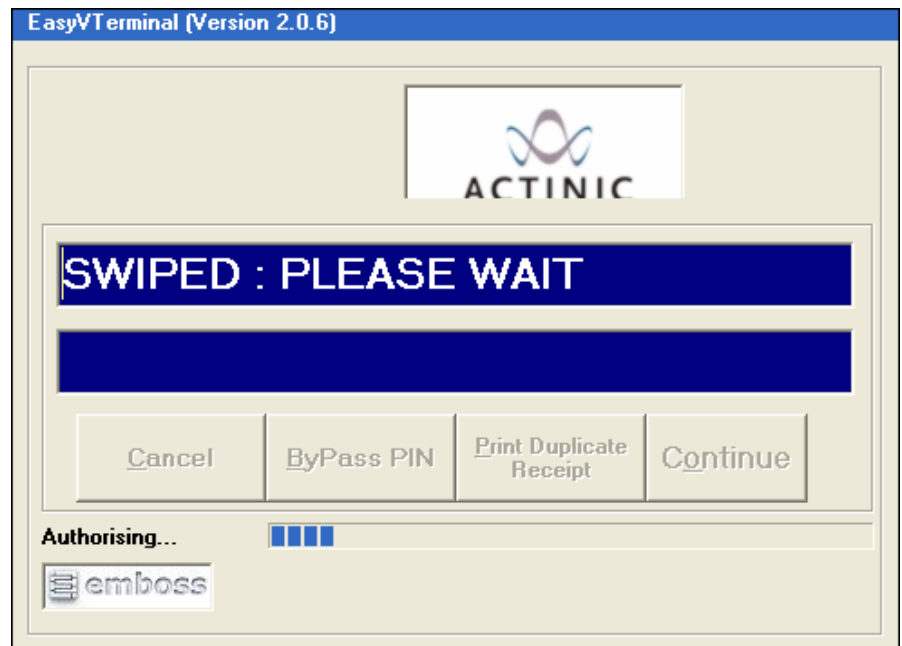


Message

'Swiped' , 'Keyed' etc.

Authorising...

Please Wait...



Authorisation Code

Accept/Reject signature...

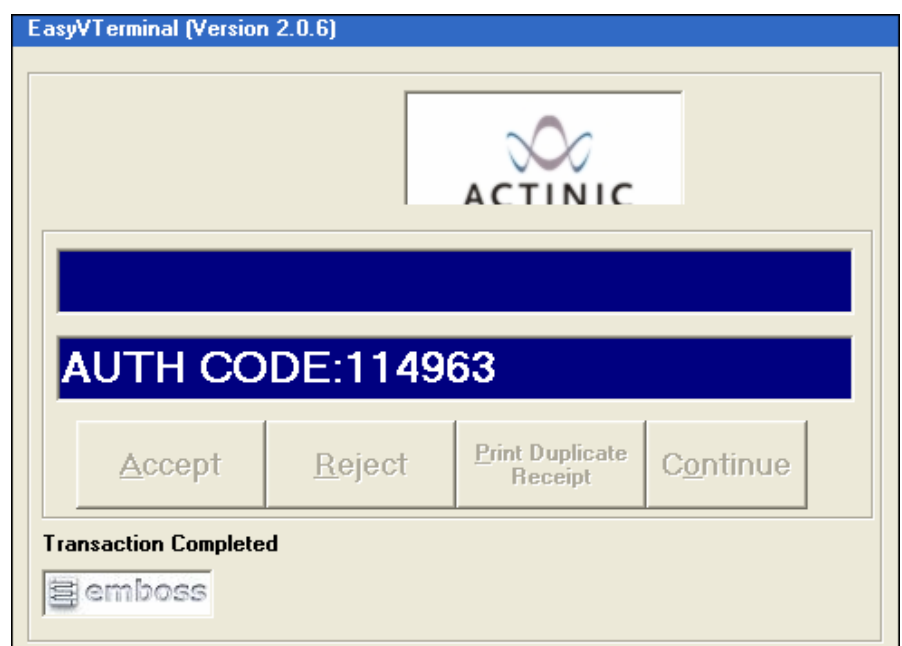
Check the signature...

Select Accept or Reject



Transaction Completed....

Authorisation Code is displayed.



Tender Screen - Showing Purchase With Cash Back Transaction:

The Cash back amount is displayed in the 'TenderType' window...

The screenshot shows a Microsoft Access window titled 'Microsoft Access - [Tender...]' with a menu bar and a toolbar. The main area displays a transaction summary for '1234' on '02 June 2006' at '15:47'. The tender type is 'PWCB' (Purchase With Cash Back). The transaction details are as follows:

Item	Description	Price	Qty	Line Total
1	Testers	12.00	1	12.00

The total amount is 12.00, highlighted in yellow. The tender type is 'CashBack' with a tendered amount of -10.00. The screen also shows a numeric keypad and buttons for 'Sale', 'Customer', 'Details', 'Receipt', 'Clear', and 'Close'. The bottom status bar indicates 'Form View' and 'NUM'.

CNP - Customer Not Present

For a 'Customer Not Present' transaction additional information will be required, eg Card No. Expiry date etc. The screen shown below will be displayed for this type of transaction.

Enter the card details...

Address is not mandatory but you may wish to complete these sections to provide additional security for the transaction.

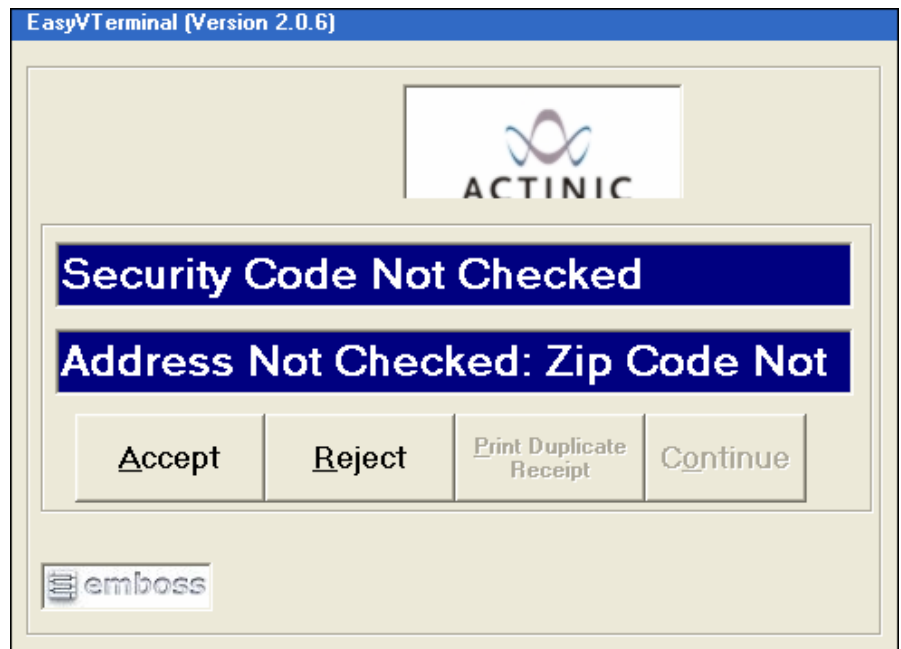
The screenshot shows a dialog box titled 'Enter Card Details...' with a close button in the top right corner. The dialog contains the following fields:

- Card No: 4000000000000002
- Expiry Date: 09/08
- Issue Number: (empty)
- Start Date: (empty)
- Address: Address Goes here
- Postcode: AA1 2BB
- CVV: 123

Navigation buttons 'Prev' (up arrow) and 'Next' (down arrow) are located on the right side. Below the fields is a numeric keypad with buttons for digits 1-0 and 'BkSp'. Below the numeric keypad is a QWERTY keyboard layout. At the bottom, there are buttons for 'Exit' (with a red arrow icon), 'Space', 'Clear' (with a red X icon), and 'OK' (with a blue checkmark icon).

The following will be displayed when you do not complete the 'Address' and 'CVV' fields...

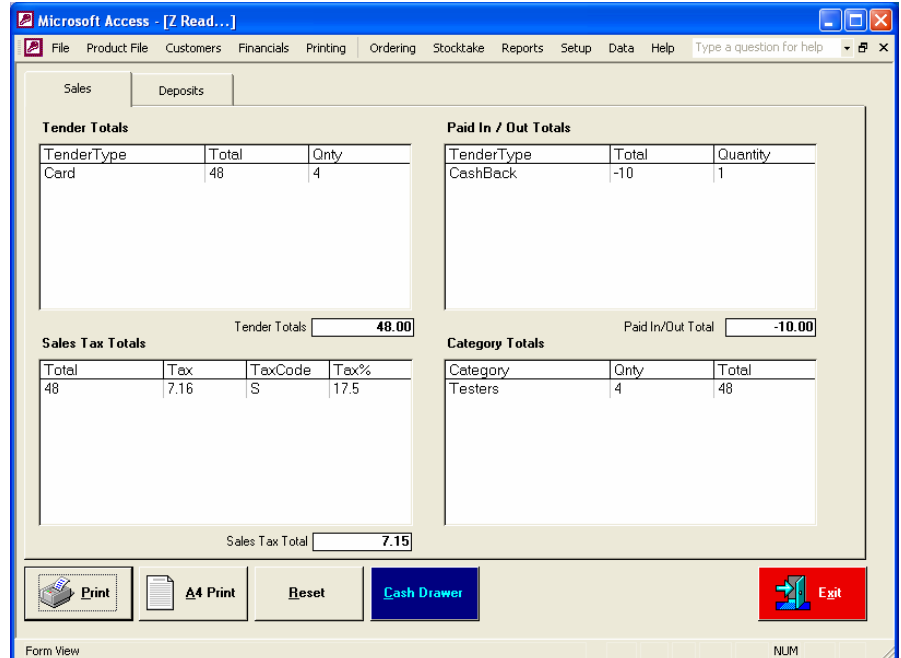
Accept or Reject the transaction...



Z Read including Cash Back Payments

Cash back payments will be displayed on the Z Read form as shown here...

They will also appear on your Z printouts...



Epos Reports – Cash Back Payments...

Reports on Cash Back payments are available from the reports menu *(available after the till has been Z'ed)*

